



imagin NEWS

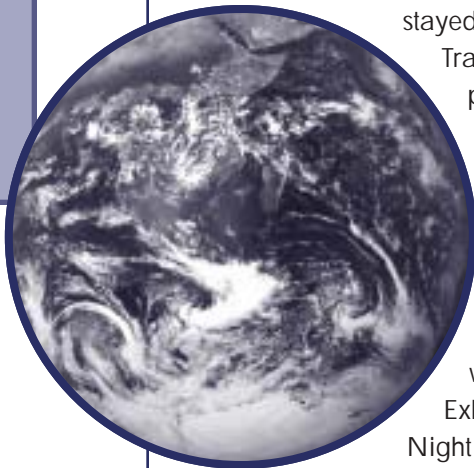
what's inside

Who's Doing
What in
Spatial
Technology

DWSD
Master
Planning

ESRI
User
Meeting

News
and
Notes



Conference 2002; Geography on the Move

By Jennifer Miller, Conference Co-Chair

The IMAGIN 2002 Conference: *Geography on the Move* was a wonderful success. In a year where most organizations experienced decreased conference attendance, IMAGIN stayed on par. The Grand Traverse Resort in Acme provided a beautiful backdrop for a spectacular conference.

So much went on in such a short period of time. It started with the special Exhibitor Appreciation Night on Sunday. For the first time, IMAGIN provided a private wine and cheese party to thank our vendors for their continued support. Many attended including the IMAGIN Board and Events Committee members. The Ciccone Vineyards was the perfect spot for the event.

On Monday, the conference got into full swing with morning workshops on a variety of relevant topics: Grant Writing, Incorporating Census Data into the Framework, Trimble and Leica GPS, Metadata, and Internet Mapping. Many of those who attended the workshops felt that they were the most useful sessions

they attended. A special thanks goes out to ICARD (Institute for Community and Regional Development), MIC (Michigan Information Center), Michigan Surveyors, Leica, and PlanSight for providing the technical expertise for the workshops.

The Monday workshops were followed up by the conference kick-off. Senator George McManus welcomed everyone to the area following a short Traverse City video. President Jim Bennett talked about what's on the horizon for IMAGIN and Events Committee Co-Chair Barbara Saunders informed attendees of the last minute conference details.

Monday afternoon included the Student Paper Competition, which is quickly becoming an important IMAGIN tradition. This year there were approximately 360 attendees, of which 21 were students. We are happy to see increased student attendance and will continue to offer reduced rates to support the educational efforts of GIS students. The Student Paper Competition has turned out to be a great way to encourage student involvement. This year's finalists came from both Michigan and Illinois universities. Graduate student Melissa Clark of the University of Michigan won first prize, \$250.00. The other finalists: James Napoli of Northern Illinois University, Leonard Ivezaj and Jennifer Black, both from Eastern Michigan were all awarded

Who's Doing What in GIS and Spatial Technology?

By *Sharyn Malone*, Equalization Director, Presque Isle County



A SUMMARY OF THE PRESQUE ISLE COUNTY GIS PROGRAM

WHO: Presque Isle County is situated in the northeastern region of the lower peninsula of Michigan. The 2001 State Equalized Value (SEV) was \$557,724,205. The parcel count was 21,828. Presque Isle County is home of the largest limestone quarry in North America, Michigan Limestone Operations.

POPULATION: 14,411 (2000 Census)

GEOGRAPHIC COVERAGE: The County's land area is 660.05 square miles (1709.54 km²) ranking it as Michigan's 21st largest county - according to the Michigan Information Center.

NUMBER OF STAFF: 1-Equalization Director, 1-GIS Technician (GIS Technician position is currently vacant)

YEARLY BUDGET: Included in Equalization Budget

GIVE A STATUS OF YOUR PROGRAM:

Presque Isle County's GIS program began in 1992, under the supervision of then Equalization Director, Laurie Spencer. One would expect that the reason an Equalization Department purchases a GIS system would be for Equalization, but the original purchase was for addressing to allow Enhanced 911 to become a reality in the County. In Presque Isle County, the Equalization Department, in addition to Equalization functions, is responsible for house numbering. While the overall population of the County held roughly steady between 1980 and 2000, the senior citizen population grew significantly. As a popular retirement area, there was a need for fast emergency response.

Because the original house numbering system was not computerized, and thus impossible to maintain, the County developed bid specifications to receive both technical and professional support services to develop a documented computerized house numbering system. The bid was awarded to the Northeast Michigan Council of Governments (NEMCOG). NEMCOG digitized all of Presque Isle County's base maps using Michigan Resource Information System (MIRIS) section corners, located structures from USGS 7.5 minute topographic sheets and aerial photography and prepared maps for review in the field. Using these maps, staff field checked every road in the County. A distance-measuring device was attached to a County car to verify that every structure had an address. Odd and even numbers were checked to see that they were on the correct side of the road. A visual check was made to see that street signs were posted and that the name was correct. A DOS-based version of C-Map, Resource Software Tax Administration, and DBase were used in this process. Enhanced 911 became a reality in Presque Isle County on December 1, 1993 - the first County in Northeastern Lower Michigan to do so!

This gave the County maps that were usable for tax maps and simple inquiries. From 1993 to 1995, corrections were made to the maps by the Equalization Department staff with minimal training. In 1995, under the new Equalization

WHO'S DOING WHAT continued on page 4



Call for Abstracts!

Geography on the Move: A Network of Knowledge

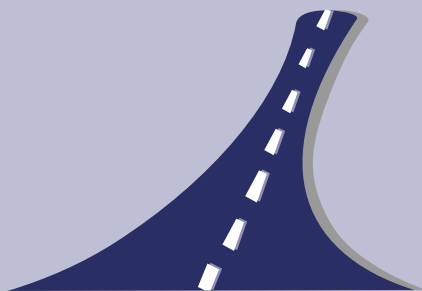
IMAGIN's 2003 Conference

May 5 - 7, 2003

Radisson Plaza Hotel

Kalamazoo, MI

The call is out! IMAGIN is accepting abstracts for its' 2003 Conference - *Geography on the Move: A Network of Knowledge*. Take part in Michigan's premier GIS conference. Share your expertise, gain visibility, and enhance your professional growth. IMAGIN's Annual Conference provides administrative, professional, and technological information to GIS professionals, administrators, and students throughout Michigan. Help to make the 2003 conference a success by submitting an abstract via email.



A Network of Knowledge

DEADLINE: Friday, September 13, 2002

SUBMIT TO: tholmes@ci.birmingham.mi.us

WHAT TO SUBMIT: Abstract and Speaker Information Form (available on our website).

Check out our web site www.imagin.org for further information!



CONFERENCE 2002 continued from page 1

\$100.00. The generous cash prizes were graciously donated by CDM. If you work with students or professors, please let them know about this competition for next year.

Monday evening had lots of activities for everyone. Conference attendees enjoyed their own wine and cheese get together Monday night. Exhibitors and attendees mingled while sampling some of the local wines. A casino night at the Turtle Creek Casino also drew a number of winners. Many took advantage of the shuttle service to enjoy a night of gambling. ESRI also hosted a User Group Meeting where they showcased what users are doing with their ESRI software.

For those that thought Monday was busy, they were surprised with an even more active Tuesday schedule. There were a total of 76 different presentations, covering a large variety of topics over the two and a half day conference. Dan Metzger's presentation on Organizing Cartographic Output got rave reviews. His standing-room-only presentation was the talk of the conference. Bob LaMacchia from the Census Bureau gave a wonderful lunchtime presentation Tuesday on the history of the Census and the new American Community Survey. Our Tuesday dinner speaker, Miles Harvey, author

of *The Island of Lost Maps*, told attendees about the exploits of historical and modern day map thieves.

The back-to-back sessions on Tuesday were hectic, but certainly made the day go by fast. Before everyone knew it, we were sitting down to dinner. The Quality Committee honored Jim Living, of Woolpert, with the Outstanding Achievement in GIS Award. Mr. Living's colleagues from Woolpert surprised him with an exceptional life history presentation.

Tuesday night concluded with Mr. Harvey's book signing. The event, which was continued Wednesday morning, was done in conjunction with Horizon Books of Traverse City. Many attendees met with the author to share their thoughts on cartographic crime.

The Events Committee would like to extend a special thank you to all the attendees who filled out the Conference Survey. The Committee uses the surveys as a tool for planning the next conference. Your thoughts and opinions are considered very carefully when we plan and look for new places to host the conference. The Committee would also like to thank everyone who attended the conference. As a committee, we have a lot of fun putting together the annual conference, and we hope that you enjoyed the workshops, presentations and evening activities.

WHO'S DOING WHAT continued from page 2

Director, Sharyn Malone, the mapping continued to be updated and maintained. Once the corrections were made, the County decided to purchase ArcView to enable better analysis and display capabilities. Using ArcView and direct links to the Resource Information Systems database, staff can now map most requests with information contained in the tax and equalization systems. Until 1995, GIS work was done only once or twice a week, whenever the staff had the time. A part-time GIS intern was hired in 1995, and by 2001, a full-time GIS employee worked for the Equalization Director. Up until this time, the program had very little input from other departments. However, as others became aware of the possibilities of GIS, there were more requests for data from the system.

The County is still using C-Map to maintain the core GIS layers. These topologically enabled layers are then imported into ArcView for query and analysis using the original equipment that was purchased for under \$10,000 in 1992. The only items that have been replaced are the mapping computer and the monitor. In the past, staff have completed projects for the Road Commission (new county road map after 911 changed some of the road names), Soil Conservation (Karst Formation project showing underground rivers and sink holes), a thesis for a graduate student at Michigan State University (MSU) showing the current shoreline compared to the ancient shoreline for archeological sites, a post-census map to help with redistricting County Commissioner Districts (from 8 to 5), and a county zoning map. GIS is currently being used for tax maps, land value maps, 911 locations, zoning variances, assessment review and numerous other inquiries and projects.

DESCRIBE ANY NEW PROJECTS OR ACTIVITIES

The County recently supplied the Corps of Engineers with shoreline maps showing the abutting parcels. The County has just completed a program for 911 to access names, addresses and the map locations of parcels in the County.

Staff are also currently working on a freely-distributable MapObjects LT program designed to query this same information. It is hoped this application will eventually reside on every desktop in the County Courthouse. As part of a

two-phase process, Aero-Metric, Inc. this spring acquired aerial photography utilizing airborne GPS technology. In Phase 2, digital orthophotos will be delivered on CD in a file format compatible with ArcView software. Digital orthophotos at 1:4800 (1"=400') scale will have a 2-foot (60.96 cm) pixel resolution while the 1:1200 (1"=100') scale images, for seven urban areas, will have 6-inch (15.24 cm) pixel resolution. This new data will facilitate repositioning the County's existing line data for a more spatially accurate parcel line map. With the changes in programs, equipment and a broader base of support throughout the State now that more counties are working with GIS, staff will be able to handle the rectification necessary between the newly acquired orthophography and parcel ownership layers.

WHAT WOULD YOU DO DIFFERENTLY IF YOU HAD TO START OVER?

Most local government people involved in GIS would prefer to use orthophotography and GPS to create their base GIS layers, but in 1992 that wasn't even a possibility. In hindsight, the one thing that should have been done was to hire a full-time person to work on the system from the beginning, and then train other staff as it progressed. This is because the system out-paced the training of the people needing to use it and was dependent on one person for too long. Also, a GIS committee should have been set up to solicit input from other departments.

WHAT VALUABLE PIECE OF INFORMATION HAVE YOU LEARNED THAT YOU WOULD LIKE TO SHARE WITH THE GIS COMMUNITY?

GIS is a team effort and should have goals that are reviewed from time to time. It isn't always necessary to spend exorbitant amounts of money to start a system that can be up and running quickly. No matter the cost, it will have been wasted if it's not usable by other departments and the public.

Sharyn Malone, Equalization Director, Presque Isle County
 PO Box 110, Rogers City, Michigan, 49779
 (989) 734-3810

piequal@george.lhi.net

“The” GIS Web Site in Michigan

When you look for Michigan GIS information on the web, IMAGIN wants you to look to the IMAGIN web site (www.imagin.org) first. The IMAGIN web site has features designed to support that goal. On the IMAGIN web site, everyone can post job openings, resumes, RFPs, news items, classified ads, events and training classes **at no cost**.

If your organization (commercial or non-profit) will be offering any GIS training classes, feel free to post them in the Resources section of the web site. Also, if you are looking for any GIS training classes, look first to the IMAGIN web site. If your organization has any news that would be of general interest (new services or products, change of address, new owner or management, etc.) please post them under the News section of the web site. If you have any job openings, post them in the Jobs page instead of the Classifieds page. The Classifieds page is for all classified type ads, except jobs.

To post a resume, job opening or any other posting on the web site, the web server will first need to verify your email address. This is done when you enter your email address on the “secure” menu and the server generates a new random password and sends it to the address you entered. Once you receive your new password, use your email address and your password to log into the web site. Once you have logged in, you can change your password if you wish and you can post messages to any of the public posting areas (Calendar of Events, Jobs, Resumes, Classifieds, News, Training and RFP’s).

The IMAGIN board meetings are listed on the web and the meetings are open to all. IMAGIN committees can post meeting announcements and minutes on the web to facilitate information sharing. Feel free to sit in on a committee meeting to see if it is something to which you are interested in contributing.

The web site also has contact information for almost all IMAGIN members. Meet someone at the recent conference but forgot their name or organization? No problem, the contact list can be sorted using a variety of keys such as first or last name, company, city, or even phone number. Please

note, by default, all IMAGIN members contact information is available on the web, but members can request that their contact information be withheld if they would rather not publicize it on the web.

You can also read back issues of the IMAGIN Newsletter, *ImagiNews*, in PDF format.

The DataLogr software, IMAGIN’s metadata creation tool, is now available on the web site for **free** download.

The web site also includes links to GIS vendors and other sources of GIS data and information from Federal, State, Commercial and non-profit sources. If what you want is not on the IMAGIN web site, you will be able to get to it from here.

Visit the IMAGIN web site at www.imagin.org and help make the IMAGIN web site “The” GIS web site in Michigan. Check back often to keep up with the latest information.

Brian Buckley, IMAGIN Web Master
MSU Center for Remote Sensing & GIS
buckley@msu.edu

Keep IMAGIN Informed!

Keep IMAGIN members informed about your endeavors, new projects, or products and innovative ideas. Send all press releases to IMAGIN for peer-review publication in the *ImagiNEWS*.

IMAGIN
via fax, 248-395-3164
or email: execdir@imagin.org

Exhibitor Appreciation Night

AT CICCONE VINEYARDS IN SUTTONS BAY



Above: Barbara Saunders, Conference co-chair and gracious hosts, Mr. and Mrs. Ciccone

Top Right: Wine tasting tour

Bottom Right: Ciccone Vineyard



Student Paper Competition



Above: Charlie Bristol, CDM sponsor and student paper competitors

Left: IMAGIN President, Jim Bennett of InfoGeographics delivers opening remarks

Conference Photos



Attendees enjoy the Conference festivities at Grand Traverse



IMAGIN Exhibitors



IMAGIN Conference 2002

GIS FOR EVERYONE AWARD WINNER

PROJECT:

IMS/GIS/CMMS/DOC: Evolving Public Service into Intelligent Community-Oriented Government

CONTACT INFORMATION:

Paul Klimas, GIS Administrator,
 City of Grand Rapids
 201 Market SW
 Grand Rapids, Michigan 49503
 (616) 456-4205
 (616) 456-3448 (FAX)
 pklimas@ci.grand-rapids.mi.us

In just one year, using GIS advancements in object-relational data management in combination with the Internet and CMMS operations, the City of Grand Rapids has formulated an interactive, Web-based customer-service solution that takes community-oriented government to technological heights. This solution, which offers citywide operational oversight, centralized customer service, and feedback to the public, will soon be the backbone supporting the City's 311 and operational management oversight tool for most City work activities.

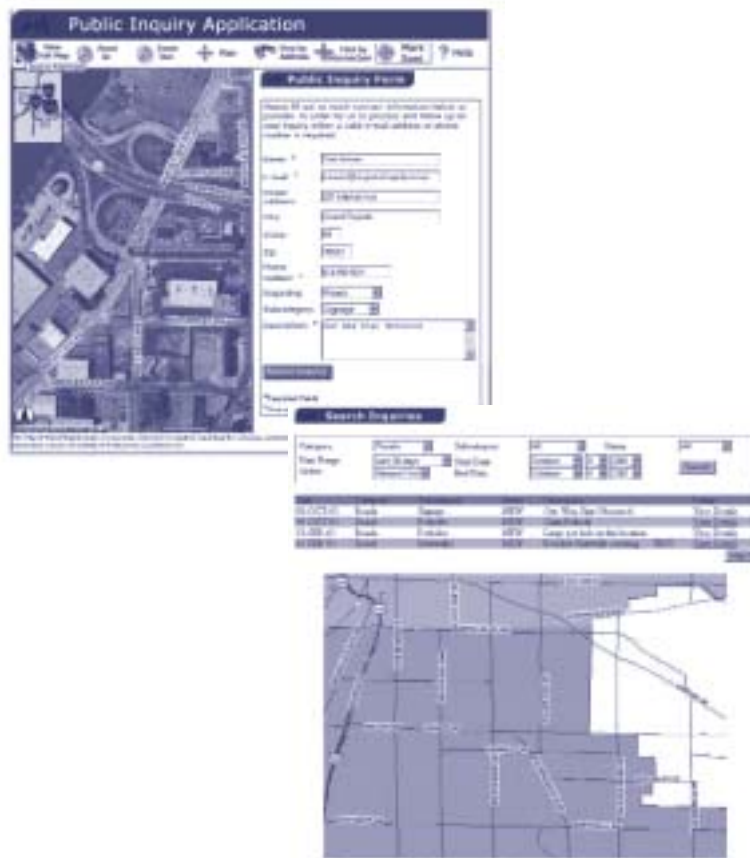
Similar to the City's current customer support operations, citizens can express ideas/concerns through the Web and identify those concerns spatially. The idea/concern is stored in a central data warehouse, redirected automatically through the City's e-mail system to the appropriate party, and then continuously tracked until resolved. Optionally, at each stage of resolution, a citizen can remain informed of progress, schedule, or prioritization of activities. Throughout the process, City management can review all inquiries and work activities and share related data.

This application allows anyone with Internet access to find answers to an array of questions asked every day in the City: When will potholes be repaired? How much are the taxes on a property? Is any tax-free or vacant land available? What does the transportation plan say about future parking needs downtown? Rate/tax payers save money through increased efficiency and quantifiable decision-making while getting

access to the answers they need and gaining a better understanding of City work activities and priorities.

The solution is built on a centralized Oracle database supporting ESRI ArcSDE data services as well as maintenance, management, and customer support tool sets. Using ESRI's ArcIMS software, custom solutions were developed and are being deployed so daily operations are not greatly impacted and so the application has the capacity to "organically" grow to support needs citywide.

However, this is just the beginning. Over the next two years, Grand Rapids and neighboring communities will experience the benefits of an entire set of public service solutions. Public safety, tax assessment, real estate, utilities, and street maintenance-vast amounts of public information will be available over the Internet, along with ways to examine, illustrate, and relate that data for study, interpretation, and innumerable other uses.



IMAGIN CONFERENCE 2002: Outstanding Individual Achievement Award

Woolpert LLP business developer and IMAGIN member, James A. Living, CP, recently received IMAGIN's first ever Outstanding Individual Achievement Award at the 11th Annual IMAGIN Conference. The Outstanding Individual Achievement Award is given to an IMAGIN member, in recognition of career-long dedication and commitment to the organization, its geospatial professionals, colleagues, members and the public that it serves.



"I'm honored to be the recipient of such an award," Living stated. "I'm privileged to be a part of the IMAGIN organization and the ideals it represents," he explained when he

accepted his plaque at the Tuesday night April 30, 2002, award ceremony. In front of a crowd of nearly 300 people, Brad Fugate, Woolpert Photogrammetry Project Director and Living scholar for nearly 20 years, gave a PowerPoint presentation summarizing Living's career GIS accomplishments.



Living began his career in 1957 when he went to work for Spartan Air Service in Ottawa, Ontario, flying WWII Mosquitoes - fighter-bombers converted for aerial photo reconnaissance. During his six-year tenure at Spartan, he flew international photo missions, spending summers in the Arctic Circle and winters in South America.

In 1963, Living accepted a position with Abrams Aerial Survey in Lansing. Over the years, he participated in hundreds of mapping projects, logging thousands of air miles around the U.S. before moving on to sales in 1972. With his outgoing personality and knowledge of aerial photography, he adapted to the new position very well. Living's honesty

and eagerness to assist was quickly recognized by clients, making him a leading salesperson and very much in demand.

In 1983, Living accepted an offer to join Woolpert and lead its sales/marketing operations from Holt. He has been serving as Woolpert's Photogrammetry's Business Developer ever since. His career spans the technological leap from the days of analog plotters through the introduction of analytical equipment to the newest ventures in light detection and ranging (LiDAR). Living was integral in establishing Woolpert's Okemos office in 2001, and he continues to be a valuable resource for providing services to local and state



government, education, and private sector clients.

During the ceremony, it was announced that the Jim Living (Lifetime Achievement) Award has been established, in a partnership between IMAGIN and long-time sponsor

Woolpert LLP. Beginning in 2003, and continuing on an annual basis thereafter, the Jim Living (Lifetime Achievement) Award will be given to an IMAGIN member, in recognition of career-long dedication and commitment to promoting IMAGIN's ideals and the geospatial sciences.

Award winners will receive a plaque. Woolpert LLP has endowed a scholarship in Jim Living's name, which will also be awarded to a student who has begun an outstanding academic career in the Geospatial Sciences and in the IMAGIN Organization. Woolpert, LLP is sponsoring the Jim Living (Lifetime Achievement) Award and Scholarship for the next five years.



GIS Certificate Program at Ferris State University

The GIS Certificate program at Ferris State University was initiated by Dr. K. Thapa in the latter part of the 1990s. What distinguishes this program from others offered worldwide is its focus and method of delivery. While the Internet was not new, web-based delivery of instruction was at its infancy when this program began. The lessons that comprise the Certificate program have matured and continue to grow.

The second major distinction of this Certificate program is its intended audience. While the basic principles of GIS are important across all disciplines that utilize spatial data, this Certificate program attempts to emphasize the local aspects of this technology. As such, real world GIS development processes and applications are emphasized. The goal of the program is to give the participants the opportunity to learn about the spatial technologies that are utilized in a GIS.

The certificate program is broken down into two courses. In the first course, students become familiar with the

fundamentals of a GIS, learn about the concepts of spatial measurements, coordinate systems, datums, data models, as well as GIS functions and applications. In the second course, participants learn about concepts of digital mapping, boundary surveys, the Public Land Survey System, and become familiarized with GIS hardware, software, and applications of GIS within local government.

Every effort is made to keep the lecture material as current as possible. With the lecture material and access to information on the Internet, participants can learn about how the new technologies are utilized within a GIS. For example, topics like GPS, digital orthophotography, LIDAR, and mobile mapping have been developed and presented to the students. These, and other topics covered within the program, give students the background necessary to see if and how a new technology can be applied to their particular application.

IMAGIN CONFERENCE 2002: Map Gallery Competition Winners

CARTOGRAPHIC CATEGORY:

1. St. Clair County - Habitat for Humanity
2. Grand Blanc Twp. - Residential Patterning
3. Allegan County - Parcel Atlas Gazeteer

COOPERATIVE CATEGORY:

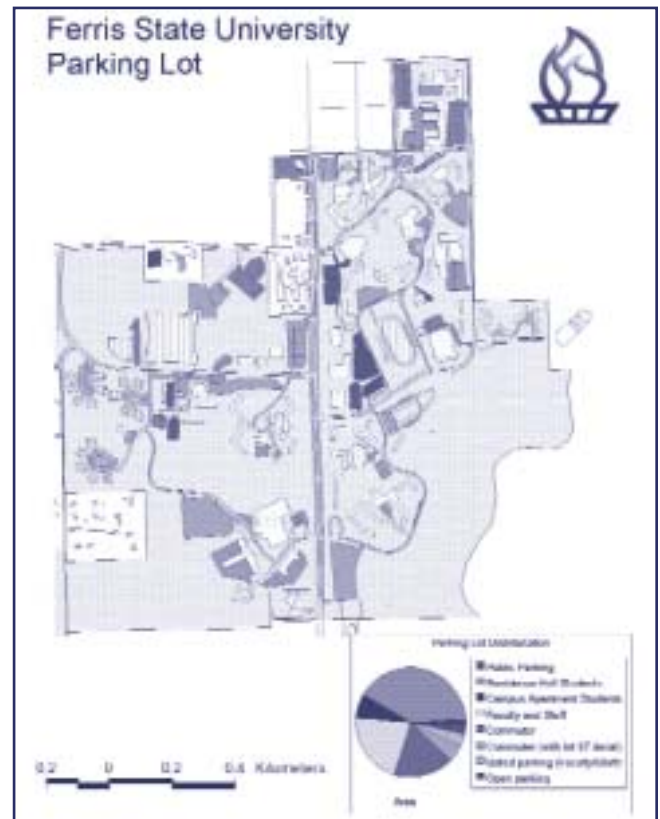
1. Grand Traverse County Road Commission and Grand Traverse County GIS Department with cartography by InfoGeographics, Inc - New County Road Map
2. St. Clair County - Anchor Bay Watershed
3. Bay Area ISD - ISD Map

DATA INTEGRATION CATEGORY:

1. Commonwealth Assoc. - Proposed Bonny Afam Transmission Line
2. Chippewa County - Type II Well Distribution Map
3. Michigan Center for Geographic Information - Unincorporated Places of Michigan

ANALYSIS CATEGORY:

1. Mackinac Island - Business District Analysis
2. St. Clair County - Bluewater Cub Scouts Eligible Active Youth
3. Michigan Center for Geographic Information - Potential Commercial Wireless Telecommunication on Co-location Sites





UniversalMAP™

A Michigan-based company of 26 years
Integrating exceptional, publishable cartography into modern GIS
Is there a Universal Map in your glovebox?

- Database Development • Cartography •
- Custom Mapping • Print Publishing and Plotting •
- Specializing in Government and Public Safety

www.universalmap.com • gis@unimapinc.com • 517-655-1956



Wade-Trim

GIS Services:
User needs analysis
Data Conversion and analysis
Database design
Global positioning systems



800.482.2864

GIS Services

imagine the difference!

For further information,
contact us at:



- Needs Assessment
- Implementation Planning
- GPS Control
- Cadastral & Infrastructure Mapping
- Database Design & Management
- Data Conversion
- Customization & Maintenance
- Training

ANDERSON, ECKSTEIN AND WESTRICK, INC.
51301 Schoenherr Road
Shelby Township, Michigan 48315
Phone: 810-726-1234 Fax: 810-726-8780
www.aewinc.com email: aewinc@aewinc.com

Civil Engineers • Surveyors • Architects
Providing Solutions for People



Worldwide Leader of GIS Software



ABRAMS AERIAL SURVEY CORP.

PHOTOGRAMMETRIC CONSULTANTS SINCE 1921

AERIAL PHOTOGRAPHY
PHOTOGRAMMIC LAB SERVICES
ANALYTICAL AIRBO TRANSFORMATION
PHOTOGRAMMETRY
DTM & DEM MAPPING
DIGITAL ORTHOPHOTOGRAPHY
DATA CONVERSIONS
GIS SERVICES

800-826-7518
TEL. 517-372-8100 FAX 517-372-8102
124 N. LARCH ST. P.O. BOX 15008, LANSING, MI 48901-5008

KUCERA INTERNATIONAL INC.

Geographic Information Professionals / Photogrammetrists / Consultants



Complete "sky-to-screen"
geospatial data services

Offices throughout the United States

58135 Western Parkway, Willoughby, Ohio 44094
Phone: (440) 975-4230 Fax: (440) 975-4238
www.kucera-gis.com

Putting a world of 'Sky-High-Tech' into your hands



www.gpsdealer.com

800.598.1600
dzobl@spaldingdedecker.com

In a industry marked by rapid change,
you need an experienced mapping
resource. For three decades, Woolpert has
provided the best proven technology for
our clients.

- Experience
- Stability
- Dependability
- Integrity
- Service



Woolpert is your solution for aerial
photography, surveying,
photogrammetry, and GIS.

Offices throughout the U.S.
Visit our website at www.woolpert.com
EOE/AAE

800.414.1045

Turn Your Data Into Decisions with SuccessGIS

The best decisions are made when you have the
complete picture. SuccessGIS turns data into
decisions. And it takes just one call (262) 786-1777.*

R.A.SMITH
& ASSOCIATES, INC.



*Ask about our GIS user group and upcoming training opportunities.
16745 W. Bluemound Road, Suite 200 Brookfield, WI 53005-5938
gis@rasmith.com / 262-786-1777 / fax 262-786-0826 / www.rasmith.com



Aerocon Photogrammetric Services, Inc.
9659 West Grand Ledge Hwy - Suite 1
Sunfield, MI 48890 Since 1967

Dennis P. Sauers, Jr.
Michigan Operations Manager

Phone (888) 374-1670
Fax (517) 566-8000
email dsauersjr@aerocon.com

- Aerial Photography
- Digital Mapping
- Image processing
- GIS Implementations

AERO-METRIC

PHOTOGRAMMETRIC & GIS SERVICES

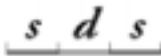
Aerial Photography - Airborne GPS and Inertial Measurement
Digital Orthophotography - Analytical Triangulation
Digital Terrain Modeling - Precision Scanning
Digital Mapping - Intergraph - AutoCAD - ARC/INFO

AERO-METRIC, INCORPORATED
4000 TECHNOLOGY PKWY. - SHERBOGTOWN, WI 53083
P.O. BOX 448 - SHERBOGTOWN, WI 53083-0448
TEL: (930) 457-8831 FAX: (930) 457-0418
E-mail: aerof@aerometric.com

bslanthol@sdss.com

419-490-4331
419-490-0802
616-504-1547
888-284-6214

Brian Hall
North Central Regional
Sales Manager



SHORT DATA STRATEGIES
PO Box 428 Milan, Ohio 44846
www.sds-inc.com

CompassCom.

GIS FIELD DATA COLLECTION
AVL INTEGRATION
E911 SERVICES

Trimble Authorized Dealer

1-219-489-6729
Visit us online at www.compasscom.com

AYRES ASSOCIATES

Engineers/Photogrammetrists
Scientists/Surveyors

2445 Darwin Road
Madison, WI 53704-3186

Cynthia Sweet
1-800-800-5191

www.AyresAssociates.com



autodesk
authorized reseller

GIS - GPS - CAD SYSTEMS -
TRAINING - NETWORKING

1-800-405-1048

www.sterling-systems.com



GIS & Mapping Software



InfoGeographics, Inc.

Professionals Demonstrating
Success with GIS!

Implementation Planning • System Specification
GIS General Contracting • Appl. Programming
ArcGIS Specialists • Desktop/SDE Tuning
Training • CAD to GIS Conversion

Telephone: (331) 585-8266
Fax: (331) 585-8307
E-Mail: info@infogeographics.com
Web Site: www.infogeographics.com



29508 Southfield Rd. #203
Southfield, MI 48076
www.imagin.org

NONPROFIT
U.S. POSTAGE PAID
FARMINGTON HILLS, MI
PERMIT NO. 592

IMAGIN is a non-profit 501(c)3 organization comprised of individuals and organizations interested in the use and application of geographic information system (GIS) technology in Michigan. Our members are committed to improving the quality and availability of digital data necessary to make good use of GIS. We believe that cooperation and open communication are necessary to achieve these objectives.

Jim Bennett, IMAGIN President

• imagiNEWS

is published bi-monthly
You may contact the editor at:

IMAGIN
29508 Southfield Rd. #203
Southfield, MI 48076
(248) 395-3163
(248) 395-3164 fax
www.imagin.org

IMAGIN MEMBERSHIP BENEFITS

- Discounts to the annual IMAGIN Conference, workshops, training sessions and IMAGIN products
- Subscription to **imagiNEWS**
- Advertising discount rates
- For data sharing organizations, access to authoritative digital information
- Complimentary licensed copy of DataLogr® metadata management software for data sharing organizations (cost to other members: \$50.00; non-members: \$85.00 plus \$4.40 postage)

Frank Sobie, Board Liaison/Information Resources Committee
Brooks E. Kelley, Chair/Information Resources Committee

Contents©2002 IMAGIN. All rights reserved.

Opinions and positions expressed by columnists and contributors are not necessarily those of IMAGIN, its officers, employees or the editor and publisher of imagiNEWS.